

McLean Brook NPS Watershed Survey

#2008RR07

Waterbody Name: McLean Brook

Location: St Agatha, T17 R4 WELS – Aroostook County

Waterbody Status: Tributary to NPS Priority Watershed (Long Lake)

Project Grantee: St. John Valley SWCD

Project Duration: November 2007 – February 2009

319 Grant Amount: \$6,115

Local Match: \$4,098



PROBLEM:

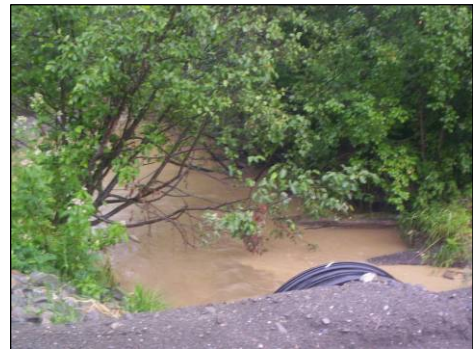
McLean Brook is a small stream with a watershed covering 12.9 square miles. The stream flows directly into Long Lake, which then flows into Mud Lake and Cross Lake (listed as impaired by DEP). In July 2006, following heavy rainstorms, a large delta of sediment laden water was visible in Long Lake at the mouth of McLean Brook. The plume extended through Long Lake and into Mud Lake. A cursory investigation by DEP revealed excessive row-crop erosion occurring in the headwaters of McLean Brook.

Conservation work has been completed in the past on some of the agricultural fields in the McLean Brook watershed, but potato production in northern climates leaves the soil exposed to erosion much of the year. The soil is suitable for agricultural production when crops are planted on the contour. However, when the state sold the farm plots years ago, they were sold as narrow strips of land making contour plowing impossible.

PROJECT DESCRIPTION:

With assistance from Natural Resources Conservation Service (NRCS) and Maine Forest Service (MFS) staff, the St. John Valley SWCD conducted a NPS survey of the tributary and its watershed, using methods adapted from the DEP's stream survey manual. St. John Valley SWCD staff met with local landowners to discuss the project's intent and to gain insight about the existing land-use concerns.

A final report was completed and distributed to the Town of Agatha, the NRCS, MFS, Irving Forestlands and local landowners. The report included maps, photos, survey methods, background, and tables listing problems, solutions and costs.



PROJECT OUTCOMES:

- NRCS and District staff and environmental students from the University of Maine at Fort Kent completed a NPS survey of the McLean Brook watershed. The survey provided a real-world opportunity for students to get field experience and learn about NPS sources of pollution, agricultural practices and BMPs.
- The survey identified six NPS sites as major contributors. Five sites are agricultural related and one site is an ATV stream crossing.
- The District plans to work with landowners on exploring appropriate and innovative conservation practices to address problem areas, and will utilize the final report as a catalyst for procuring cost-share funds through 319 or such USDA programs as the *Environmental Quality Incentives Program* (EQIP), to assist with the implementation of such conservation practices. As a result of the survey, the NRCS's Local Work Group has designated McLean Brook as a priority for EQIP funding.
- A Final Survey Report documenting all the NPS findings was produced and is available at the District along with an informational brochure.



McLean Brook Watershed Survey
NPS Site Locations



Sediment-laden runoff from a farm in
the McLean Brook watershed

PROJECT PARTNERS:

University of Maine at Fort Kent, Environmental Studies Students
USDA Natural Resource Conservation Service, Ft. Kent Office

CONTACT INFORMATION:

Kathy Hoppe, Maine DEP – (207) 760-3134, Kathy.M.Hoppe@maine.gov
Casey Cote, St. John SWCD – (207) 834-6435, casey.cote@me.nacdnet.net, www.sjv.me.nacdnet.org

Suggested Citation:

Maine Department of Environmental Protection (2010) “Nonpoint Source Management Program 2009 Annual Report,” Document# DEPLW-1159 2010. Augusta: MDEP.