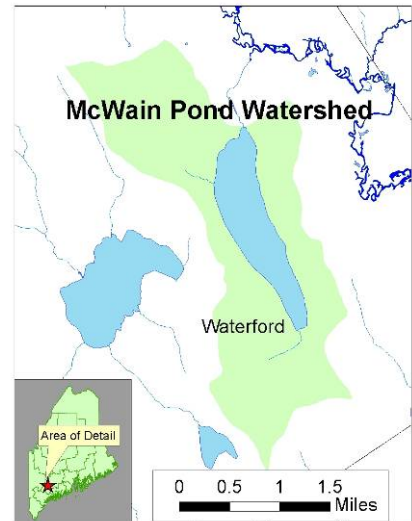


McWain Pond Watershed Improvement Project

#2008RR04

Waterbody Name: McWain Pond
Location: Waterford – Oxford County
Waterbody Status: NPS Priority Watershed
Project Grantee: McWain Pond Association
Project Duration: April 2008 – September 2010
319 Grant Amount: \$42,509
Local Match: \$49,009



PROBLEM:

McWain Pond (also known as Long Pond) has a surface area of 445 acres and a watershed area of 3.9 square miles. McWain Pond drains to the Crooked River, which flows into Sebago Lake – a drinking water source for more than 45,000 households in southern Maine. McWain Pond’s shoreline is fringed with 75 seasonal and year-round homes and two summer youth camps, which attract a total of 400 campers each year.

The Maine DEP, Lakes Environmental Association (LEA) and local volunteer monitors have tested McWain Pond’s water quality since 1978. This testing indicates that the bottom waters of the lake experience oxygen depletion to levels that severely limit fish habitat and pose a high risk of phosphorus recycling problems. A 2006 watershed survey (#2006P-14) identified 95 erosion sites and construction designs were completed for four of the priority sites. The land uses with the most sites included residential (20 sites), town roads (17 sites), driveways (13 sites), summer youth camps (12 sites) and private roads (7 sites).

PROJECT DESCRIPTION:

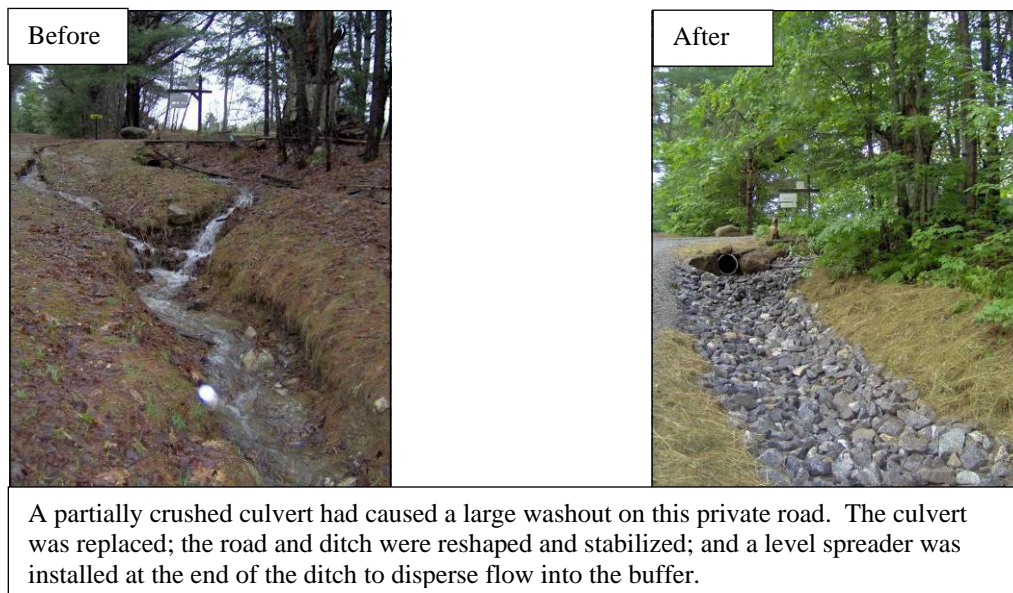
The project purpose was to reduce erosion that washes into the pond and to educate the watershed community about erosion control measures. The project planned to install conservation practices at 15 NPS sites from the watershed survey, provide technical assistance to 25 landowners and offer 10 cost-sharing ‘mini-grants’ to aid landowners’ erosion control efforts.

Project outreach included presentations at the McWain Pond Association (MPA) annual meeting and to the Town Select Board; two hands-on workshops; a final project brochure showcasing completed projects; and articles in local newspapers and partner newsletters and websites. The project was guided by a steering committee comprised of representatives from the MPA, Portland Water District, LEA, Maine DEP, Town of Waterford and other local residents.



PROJECT OUTCOMES:

- This modestly-sized project fixed erosion problems at 15 priority sites in the watershed, resulting in the reduction of pollutant loading to McWain Pond by an estimated 82 tons of sediment and 70 pounds of phosphorus per year (Region 5 Method and WEPP Model).
- Technical assistance was provided to 25 property owners, and 70% of these visits resulted in a 'mini grant' or a NPS abatement project. Other landowners pledged to do the work on their own.
- Ten landowners received \$300 'mini grants' to install conservation practices on their properties. Landowner match totaled over \$14,000 and far exceeded the 50% match requirements.
- A camp road workshop was held in July 2009, and a buffer workshop was held in July 2010. The camp road workshop attracted 22 people from six different lakes in the region and included a presentation about new camp road legislation and a tour of grant work completed on a private road.
- Local match for the project totaled \$49,009, over \$20,000 more than the original project goal. Much of this match can be attributed to the high level of involvement from the MPA, Town and landowners.



PROJECT PARTNERS:

Birch Rock Camp
Camp Waziyatah
Lakes Environmental Association
Portland Water District
Town of Waterford

CONTACT INFORMATION:

Wendy Garland, DEP – (207) 822-6320, wendy.garland@maine.gov
Jeff Stern, Fiddlehead Consulting – (207) 647-8580, sternjm@hotmail.com

Suggested Citation:

Maine Department of Environmental Protection (2011) "Nonpoint Source Management Program 2010 Annual Report," Document# DEPLW-1205 2011. Augusta: MDEP.