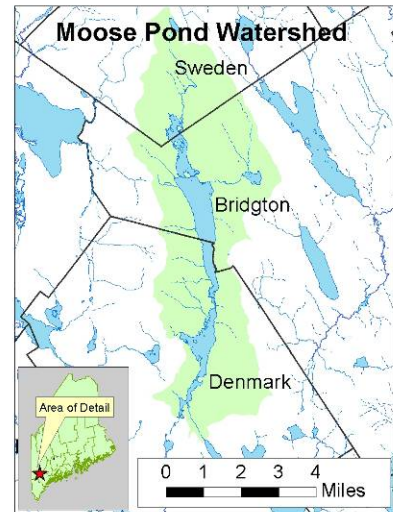


Moose Pond Watershed Survey

#2009PP17

Waterbody Name: Moose Pond
Location: Bridgton, Denmark and Sweden –
Cumberland and Oxford Counties
Waterbody Status: NPS Priority Watershed
Project Grantee: Cumberland County SWCD
Project Duration: January 2010 – April 2011
604(b) Grant Amount: \$15,563
Local Match: \$10,724



PROBLEM:

Moose Pond has three distinct basins with a combined surface area of 1,617 acres. The lake sits at the base of Pleasant Mountain, and its shoreline is fringed with three public boat launches, a scenic public picnic/rest area on Route 302, a public beach, a private campground, two summer residential youth camps and numerous homes. The 17.4 square mile watershed includes the Shawnee Peak Ski Area and is part of the Saco River watershed.

Lakes Environmental Association (LEA) and local volunteers have monitored Moose Pond water quality since 1976. The uppermost basin, which is located in the least developed part of the watershed, is considered to have above average water quality. The lower two basins show moderate oxygen depletion in the bottom waters of the lake, which can limit the pond's coldwater fish habitat. As a result, LEA rates Moose Pond as a moderate to high degree of concern. The Moose Pond Association (MPA) has worked with LEA to conduct water quality monitoring, courtesy boat inspections, a boat washing station and erosion control projects along Route 302 and Caruso Island. In addition, LEA helps watershed residents address erosion problems through its *Clean Lake Check-Up* program.

PROJECT DESCRIPTION:

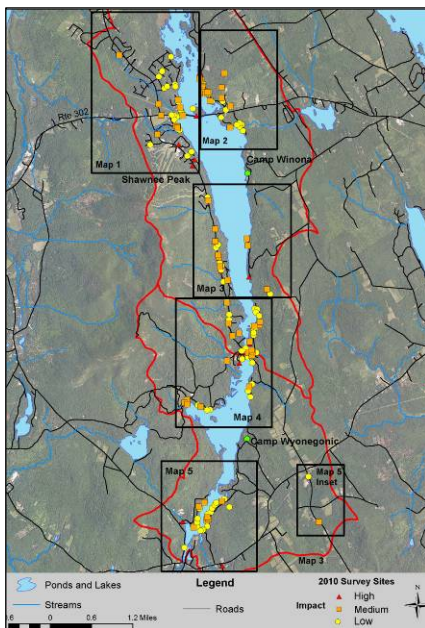
The purpose of the project was to identify, document, and prioritize soil erosion sites in the Moose Pond watershed. Survey methods were based on those outlined in the DEP publication, *Citizen's Guide to Lake Watershed Surveys*. Postcards were sent to all watershed property owners (1,400 parcels) to notify them of the survey and invite their participation in the project. In May 2010, 22 volunteers participated in the training session and survey.



In total, 208 erosion sites were identified in the watershed. Survey data was summarized in the *Moose Pond Watershed Survey Report*. Survey reports were distributed to town officials, libraries, and interested residents and posted at www.cumberlandswcd.org.

PROJECT OUTCOMES:

- Project staff and volunteers surveyed the entire Moose Pond watershed and documented 208 erosion sites. Most identified sites were associated with residential areas (73 sites), town roads (34 sites), commercial properties (30 sites), driveways (24 sites), beach access sites (18 sites) and private roads (17 sites).
- The *Moose Pond Watershed Survey Report* was completed in March 2011. The report summarizes watershed survey findings and lists specific descriptions and recommendations for identified sites.
- During the project, the Moose Pond Association prepared a mailing to all property owners with identified erosion sites and met with the Towns of Denmark and Sweden to ensure that survey recommendations would be incorporated into upcoming road projects. Their strong leadership and initiative earned them CCSWCD's Stewardship Group of the Year Award in April 2011.
- The project laid the foundation for mitigation efforts in the watershed. CCSWCD was awarded a 319 grant for the *Moose Pond Watershed Improvement Project* which begins in March 2012.



Volunteers for the Moose Pond Watershed Survey

PROJECT PARTNERS:

Lakes Environmental Association
Town of Bridgton
Town of Sweden

Moose Pond Association
Town of Denmark

CONTACT INFORMATION:

Wendy Garland, DEP – (207) 615-2451, wendy.garland@maine.gov

Heather True, Cumberland County SWCD – (207) 892-4700, htrue@cumberlandswcd.org

Suggested Citation:

Maine Department of Environmental Protection (2012) “Nonpoint Source Management Program 2011 Annual Report,” Document # DEPLW-1237. Augusta: MDEP.