

# Toddy Pond Watershed Survey

## #2011PP19

Waterbody Name: Toddy Pond

Location: Orland, Surry, Penobscot, Blue Hill – Hancock County

Waterbody Status: Attains Class GPA

Project Grantee: Hancock County Soil and Water Conservation District

Project Duration: January 2012 – May 2013

319 Grant Amount: \$17,941

Local Match: \$12,032



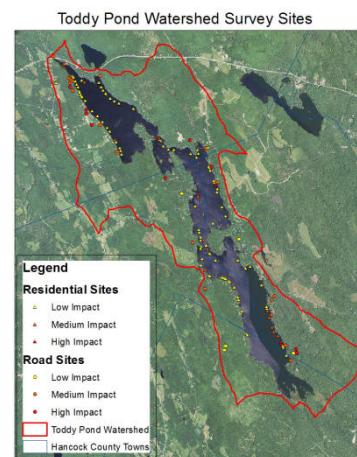
### PROBLEM:

The Toddy Pond watershed is experiencing significant development pressure. Many summer camps have been converted to year-round residences and poorly built, inadequately maintained camp roads and driveways are getting heavier use. These factors indicate an increasing threat of NPS pollution entering Toddy Pond from developed areas in the watershed. It is important to document these NPS issues and work towards correcting them before the water quality of Toddy Pond experiences a substantial decline.

Since 1977, water quality data has been collected on Toddy Pond by the Maine DEP and the Volunteer Lake Monitoring Program. The water quality of Toddy Pond is considered to be above average and the potential for nuisance algae blooms is low. However, secchi disk readings show a decline of almost two meters in water clarity in the last ten years.

### PROJECT DESCRIPTION:

The watershed survey was managed by Hancock County Soil and Water Conservation District (the District) and guided by a Steering Committee consisting of the Toddy Pond Association, Maine DEP, towns of Orland, Surry, Blue Hill, and Penobscot, Toddy Pond watershed residents, and University of Maine Cooperative Extension (UMCE). The Steering Committee was the force behind the planning and implementation of the watershed survey. The entire Toddy Pond watershed was surveyed during this project. The District and the UMCE trained the volunteers, completed the follow-up survey, and produced the survey report. The community was informed of project activities through an initial mailing to watershed residents, articles in the District newsletter and on their website, press releases to local newspapers, the Toddy Pond Association newsletter, and at the Toddy Pond Association Annual Meeting. During the survey, volunteers distributed educational materials to watershed residents and took the opportunity to speak with residents regarding NPS problems, their impacts on water quality, and potential solutions and fixes.



## PROJECT OUTCOMES:

- This project successfully created the Toddy Pond Watershed Survey Report which summarizes the findings of the watershed survey and gives information on the number and nature of the NPS sites, the severity of each site's erosion problems, the recommended fixes, influence on the water quality of the lake, and the cost and technical level needed to fix the problem.
- It was estimated that 176 tons of sediment and 150 pounds of phosphorus per year is getting into the lake from 15 sites of the most significant NPS sites found in the watershed
- Creation of a NPS Site Tracker database which will be used by the Toddy Pond Association to track changes to documented NPS sites and the status of new sites as they are discovered.
- Helped to create a more knowledgeable citizenry on NPS pollution and its effects on Toddy Pond.

## PROJECT PARTNERS:

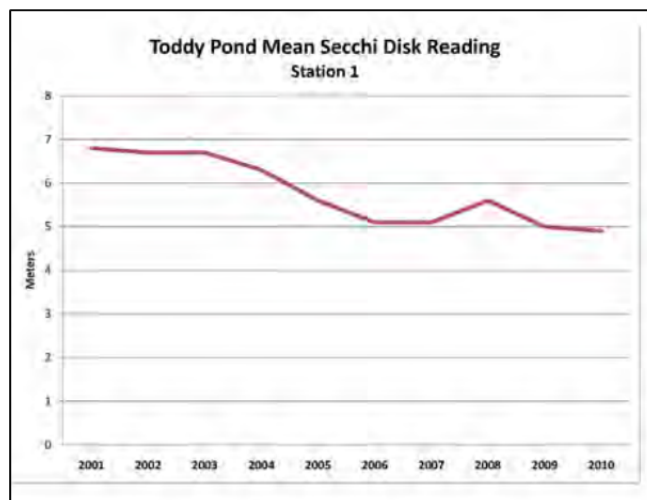
Toddy Pond Association  
Towns of Orland, Surry, Penobscot, and Blue Hill  
University of Maine Cooperative Extension, Water Quality Program

## CONTACT INFORMATION:

Greg Beane, DEP, 299-4703, [greg.e.beane@maine.gov](mailto:greg.e.beane@maine.gov)  
Megan Facciolo, Hancock County Soil and Water Conservation District, 667-8663, [hancockcountyswcd@live.com](mailto:hancockcountyswcd@live.com)



NPS sites found in the Toddy Pond watershed during the survey.



## Suggested Citation:

Maine Department of Environmental Protection (2014) "Nonpoint Source Management Program 2013 Annual Report," Document # DEPLW-1269. Augusta: MDEP.