

Kennedy Brook NPS Watershed Survey

#2002R-24B - WIFAP

Waterbody Name: Kennedy Brook

Location: Presque Isle – Aroostook County

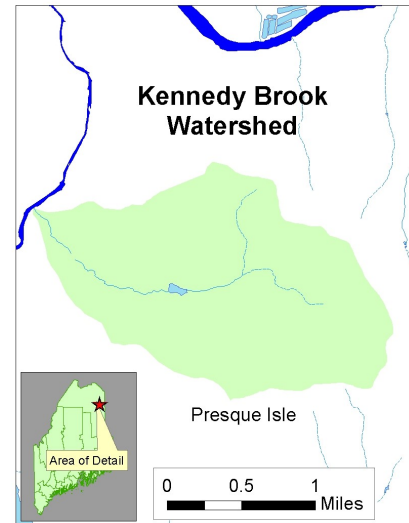
Waterbody Status: Tributary to Presque Isle Stream, which is Impaired and an NPS Priority Watershed

Project Sponsor: Central Aroostook SWCD

Project Duration: January 2002 – September 2006

319 Grant Amount: \$6,000

Local Match: \$2,000 (Maine Dept. of Ag.)



PROBLEM:

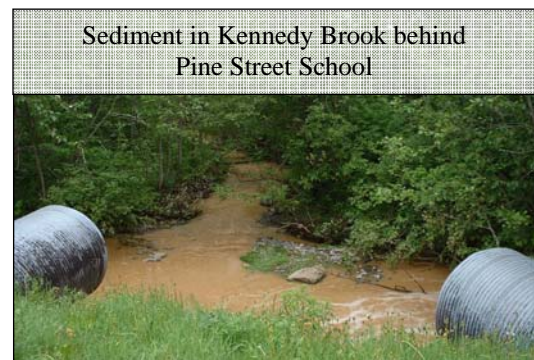
Kennedy Brook's watershed is part of Presque Isle's quickly urbanizing area. Presently the watershed is composed of agriculture, forest, industrial, municipal and residential land uses. It is estimated that 60% of the watershed is developed, and the remaining 40% is in agriculture and forestry. Kennedy Brook drains into Presque Isle Stream. The reach of Presque Isle Stream located at the confluence with Kennedy Brook is on Maine's list of Impaired Waters.

Mantle Lake is a small (3-5 acre), unclassified impoundment of Kennedy Brook. The lake was created before 1900 as the original water supply for the city of Presque Isle. In 1911 the City began using the Presque Isle Stream as its water supply, but retained ownership of the land around Mantle Lake. Today Mantle Lake area is an important municipal park. However, Mantle Lake experiences algal blooms for most of the summer, every summer.

PROJECT DESCRIPTION:

The purpose of the project was to conduct an NPS survey of the Kennedy Brook watershed, create an implementation plan for future work and carry out educational efforts to keep stakeholders informed about the watershed.

The project was not fully completed as planned; however, most of the watershed was surveyed. Survey methods were adapted from those described in *A Citizen's Guide to Lake Watershed Surveys*. Central Aroostook SWCD used trained volunteers to conduct the survey. The 21 documented NPS sites were listed in a spreadsheet, and maps were created to show the site locations. Project outreach included numerous stories in the local paper and news.



PROJECT OUTCOMES:

- The majority of the Kennedy Brook watershed was surveyed.
- 21 NPS sites (13 high and 9 medium impact) were identified in the watershed. Sites were listed in a spreadsheet and highlighted on a watershed map.
- Students at Presque Isle High School participated in a stream habitat walk along Kennedy Brook and learned about stream ecology.
- Numerous stories covering Kennedy Brook and Mantle Lake appeared in the local newspaper and television news.



PROJECT PARTNERS:

Maine Department of Agriculture

Presque Isle High School

City of Presque Isle

CONTACT INFORMATION:

Kathy Hoppe, DEP – (207) 760-3134, kathy.m.hoppe@maine.gov

Linda Alverson, Central Aroostook SWCD – (207) 764-4153 ext 3, linda.alverson@me.nacdnet.net

Suggested Citation:

Maine Department of Environmental Protection (2007) “Nonpoint Source Management Program 2006 Annual Report,” Document# DEPLW0836 2007. Augusta: MDEP.