

China Region Watershed Management Project: Phase II

#2002R-25

Waterbody Names: China Lake, Threecornered Pond, Threemile Pond and Webber Pond

Location: Augusta, China, Vassalboro, Windsor – Kennebec County

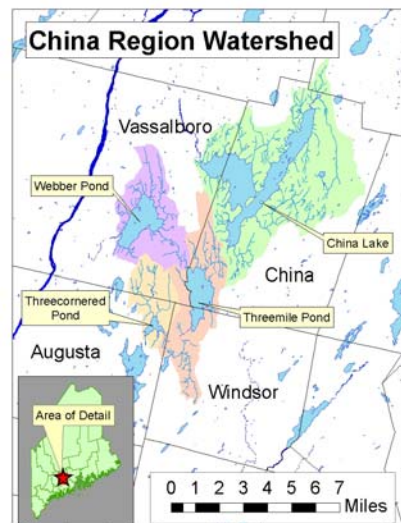
Waterbody Status: All: Impaired, NPS Priority Watersheds

Project Sponsor: China Region Lakes Alliance

Project Duration: April 2003 – July 2006

319 Grant Amount: \$103,422

Local Match: \$149,539



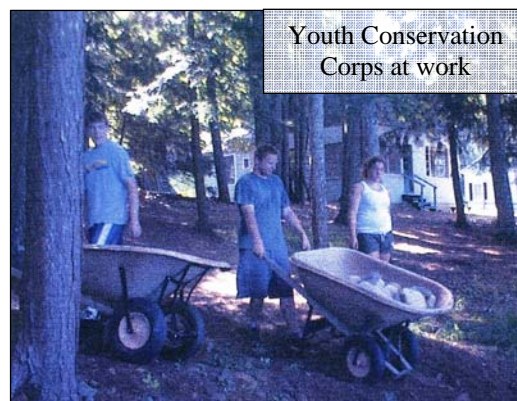
PROBLEM:

The China Region Lakes are located near the population centers of Augusta and Waterville and are heavily used for recreation. China Lake, Threecornered Pond, Threemile Pond and Webber Pond are all on the State's list of impaired waters. China Lake is a 3,848 acre lake with a direct drainage area of 32 square miles. Threemile Pond is 1,132 acres with a direct drainage of 9.3 square miles. Threecornered Pond is 190 acres with a direct drainage of 5.1 square miles. Webber Pond is 1,198 acres with a direct drainage of 8.1 square miles.

Annual nuisance algae blooms, resulting from excess phosphorus, cause these lakes to violate water quality standards. Since 1998, the China Region Lakes Alliance (CRLA) has been following the China Lakes Region Watershed Management Plan, which lays out actions needed to protect and improve water quality. In addition, Maine DEP has completed TMDL reports for each of the lakes. Nonpoint source pollution (NPS) and internal phosphorus recycling are the principal sources of phosphorus in this watershed.

PROJECT DESCRIPTION:

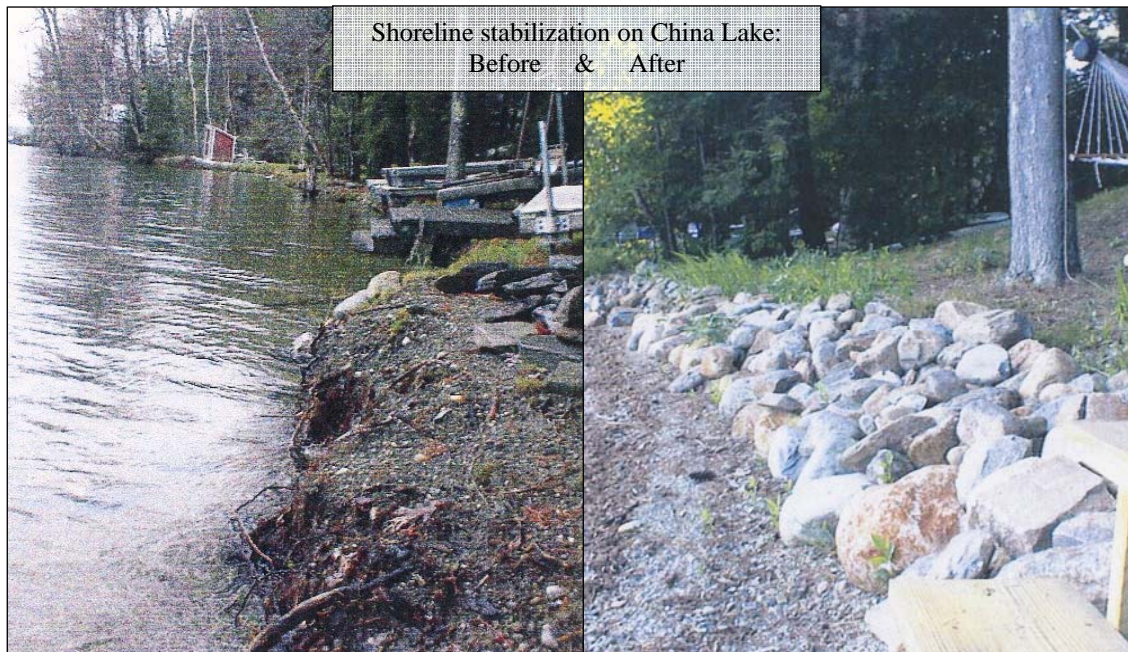
The purpose of the project was to continue locally supported NPS control work in the four lake watersheds. Work focused on fixing erosion problems and reducing the amount of sediment and phosphorus entering the lakes. Actions included identification of NPS sites, outreach to landowners, technical assistance, implementation of BMPs at sites, and educational outreach. Watershed property consultations and technical assistance were directed to landowners with the higher priority sites. Site-specific recommendations were provided to encourage landowners to adopt appropriate BMPs for residential properties and private camp roads.



Cost sharing assistance helped many landowners adopt BMPs at NPS sites. The YCC, which has been supported by the local communities for over 14 years, continued to help landowners install BMPs at numerous residential sites.

PROJECT OUTCOMES:

- BMPs were installed at 51 sites. Work included camp road erosion and sediment control, planting of vegetative buffers, and lakeshore stabilization. Eroding lake shorelines were stabilized at 25 properties (totaling 2,000 linear feet), with much of the work being done by the YCC.
- CRLA provided technical assistance and advice to landowners at 125 sites.
- Watershed stewardship was promoted through landowner contacts, workshops, and an Annual Lake Awareness Day involving students.
- CRLA prepared two brief reports: *Evaluation of Lake Water Quality Trend for China, Webber and Threemile Lakes* and *Agricultural Lands Review for the China Region Watershed Management Project*.
- Pollutant loading to the lake was reduced by an estimated 11 tons of sediment and 6.6 pounds of phosphorus per year (USEPA Region 5 Method).



PROJECT PARTNERS:

Towns of China, Vassalboro, and Windsor
Kennebec Water District
Kennebec County SWCD
China Region Youth Conservation Corps
Lake Associations of China Lake, Threemile Pond, Webber Pond and Threecornered Pond

CONTACT INFORMATION:

Norm Marcotte, DEP – (207) 287-7727, norm.g.marcotte@maine.gov
China Region Lakes Alliance – (207) 968-2856, lakesalliance@yahoo.com

Suggested Citation:

Maine Department of Environmental Protection (2007) “Nonpoint Source Management Program 2006 Annual Report,” Document# DEPLW0836 2007. Augusta: MDEP.