

# Little Ossipee Lake Improvement Project - Watershed Assessment

## #2003R-17B - WIFAP

Waterbody Name: Little Ossipee Lake  
Location: Waterboro – York County  
Waterbody Status: NPS Priority Watershed, Most at Risk  
Project Sponsor: York County SWCD  
Project Duration: January 2004 – January 2007  
319 Grant Amount: \$6,000  
Local Match: \$10,361 (local), \$4,000 (ME Dept. Ag.)



### PROBLEM:

The Little Ossipee Lake watershed extends 4.7 square miles in the Town of Waterboro. The lake itself covers 557 acres and is located next to Waterboro Center. The lake's shoreline is heavily developed with over 450 seasonal camps and year round homes, a private campground, public boat ramp, town swimming area and town park.

The DEP and volunteers have monitored Little Ossipee Lake's water quality since 1977. The water quality is considered excellent, but as with many of Maine's lakes, Little Ossipee's water quality is threatened by NPS pollution from uncontrolled soil erosion and stormwater runoff. In 1997, the Little Ossipee Lake Association (LOLA), DEP and York County SWCD conducted a 319-funded watershed survey and identified 103 erosion sites. LOLA then worked with the Town of Waterboro and Maine Department of Transportation (DOT) to fix several of these sites and raise awareness in the watershed.

### PROJECT DESCRIPTION:

The purpose of the project was to identify, document and prioritize remaining soil erosion sites in the Little Ossipee Lake Watershed and to recommend Best Management Practices for each of these sites.

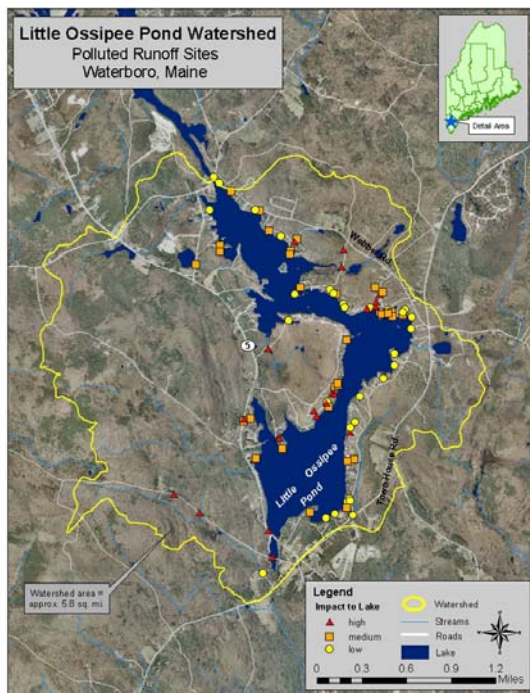
Survey methods were based on those outlined in the DEP publication, *Citizen's Guide to Lake Watershed Surveys*. The volunteer training session was held on May 15, 2004. Seven volunteers were trained to identify erosion problems, rate water quality impact and develop recommendations. Volunteers completed the survey over the following month.



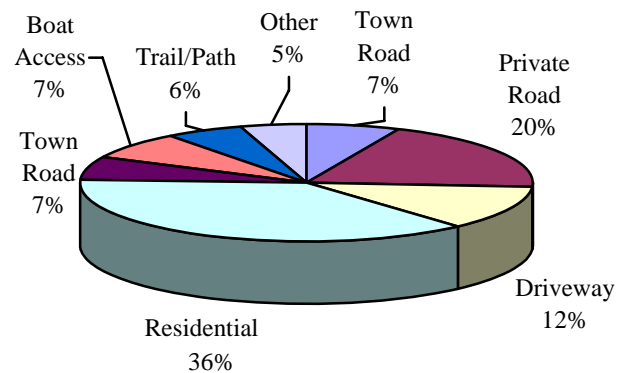
Technical staff compiled the survey data, developed maps and created the *Little Ossipee Lake Watershed Survey Report*. In total, 85 sites were identified that are impacting or have the potential to impact the lake. Project staff also developed preliminary designs and made landowner contact at 11 high priority sites to set the stage for future mitigation efforts. Survey reports were distributed to municipal officials, and a summary brochure was mailed to 800 households and placed at the town office. Presentations were delivered at LOLA annual meetings and the Waterboro Select Board, and numerous articles were printed in the local papers and LOLA newsletter.

## PROJECT OUTCOMES:

- Project staff and volunteers surveyed all of the Little Ossipee Lake Watershed and documented 85 erosion sites. They also developed preliminary recommendations for each site and rated the impact to the lake and cost and technical level required to fix each site.
- Project staff produced the *Little Ossipee Lake Watershed Survey Report* (April 2006), which summarizes watershed survey findings, lists specific information on each identified site and outlines next steps for watershed stewardship.
- A brochure was developed and mailed to 550 households around the lake to provide information about survey findings and raise awareness about lake protection. Copies of the full survey report were distributed to municipal officials, LOLA Board of Directors and landowners associated with the 55 high and medium impact sites.
- Preliminary designs were developed for 11 priority sites around the watershed. This work laid the foundation for the subsequent WIFAP project, *Little Ossipee Lake Improvement Project – Phase 1 Implementation*, which started in November 2004.



## Breakdown of Sites by Land Use



Other – State Road 2%, Beach 2%, Construction Site 1%

## PROJECT PARTNERS:

Little Ossipee Lake Association  
Town of Waterboro  
Maine Department of Agriculture

## CONTACT INFORMATION:

Wendy Garland, DEP – (207) 822-6320, [wendy.garland@maine.gov](mailto:wendy.garland@maine.gov)  
Forrest Bell, York County SWCD – (207) 650-7597, [info@fbenvironmental.com](mailto:info@fbenvironmental.com)

Suggested Citation:

Maine Department of Environmental Protection (2007) "Nonpoint Source Management Program 2006 Annual Report," Document# DEPLW0836 2007. Augusta: MDEP.