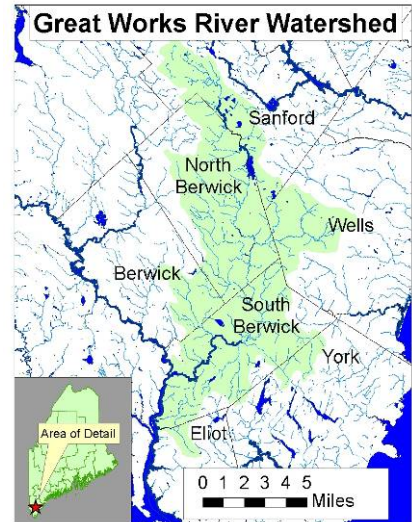


Great Works River Watershed Management Plan Project

#2004R-06

Waterbody Name: Great Works River
Location: Sanford, North Berwick, Berwick, South Berwick, Eliot, Wells, York – York County
Project Grantee: York County SWCD
Project Duration: April 2004 – December 2007
319 Grant Amount: \$22,584
Local Match: \$17,973



PROBLEM:

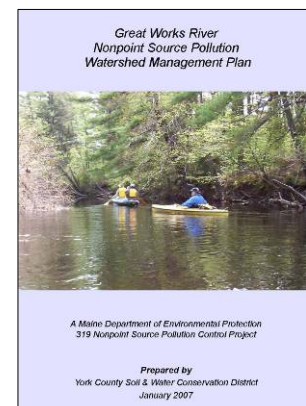
The Great Works River flows 23 miles through six towns and empties into the Salmon Falls River in South Berwick. The river is impounded in four areas, including one dam at the lower end of Bauneg Beg Lake. The 84 square mile watershed includes extensive forested areas and three population centers in Sanford, North Berwick and South Berwick.

According to the Maine DEP's TMDL report for the Salmon Falls River (May 1999), the Great Works River is the largest contributor of NPS pollution to the Salmon Falls Estuary. The TMDL report calls for implementing BMPs in the Great Works River watershed to reduce phosphorus loads that contribute to impairment and high intensity algal blooms of the Salmon Falls River. High bacteria levels and heavy metals have also been identified as potential sources of pollution to the Great Works River. The Great Works River Watershed Coalition was formed in 2001 and conducts water quality monitoring on 18 sites in the watershed.

In 1999, the Bauneg Beg Lake Association and Maine DEP conducted a survey around the lake and identified 131 erosion sites. In 2001, a watershed survey was conducted in the lower 68 square mile portion of the watershed. Volunteers and technical consultants identified 78 areas with soil erosion and uncontrolled runoff to the river and its tributaries. The majority of these sites were associated with roads, driveways, and residential areas. In 2004, a watershed survey of the remaining 16 square miles of the upper watershed identified 64 additional NPS sites, including many in downtown Sanford.

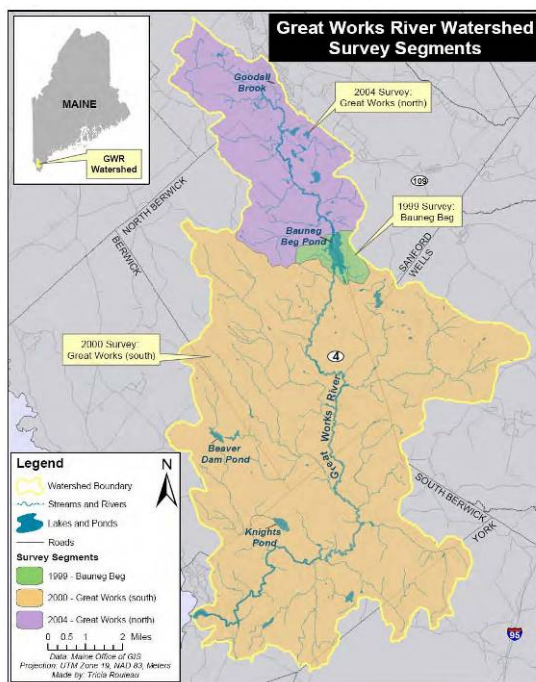
PROJECT DESCRIPTION:

The primary purpose of this project was to create a watershed management plan for the Great Works River. Project staff updated and compiled information from the three past watershed surveys, analyzed water quality data and created GIS maps of watershed resources. On April 30, 2005, about 50 local residents and town officials attended a half-day community forum to discuss watershed issues and brainstorm strategies for protecting the Great Works River and its tributaries. Using watershed data and input from the forum, a draft management plan was developed. Public comments on the draft were incorporated into the plan, and the *Great Works River Watershed Management Plan* was completed in January 2007.



PROJECT OUTCOMES:

- 50 local residents, municipal officials and resource professionals attended a half-day Community Watershed Forum on April 30, 2005. The issues and strategies discussed during the forum served as the framework for the action plan in the Watershed Management Plan.
- Three committees were formed to help carry out the actions listed in the plan. The committees include Funding and Planning; Education, Stewardship and Water Quality Monitoring; and Buffer Campaign and BMP Implementation.
- The *Great Works River Watershed Management Plan* was finalized in January 2007. Copies of the report were distributed to the towns of Sanford, North Berwick, York, Wells, South Berwick, and Berwick and posted on the York County SWCD website (www.yorkswcd.org).



PROJECT PARTNERS:

Wells National Estuarine Research Reserve
Town of North Berwick
Town of Berwick
Town of South Berwick
Town of Sanford
Bauneg Beg Lake Association
USDA Natural Resources Conservation Services
University of Maine Cooperative Extension

CONTACT INFORMATION:

Donald Kale, Maine DEP – (207) 822-6319, Donald.kale@maine.gov
Forrest Bell, York County SWCD – (207) 324-7015, info@fbenvironmental.com

Suggested Citation: Maine Department of Environmental Protection (2008) "Nonpoint Source Management Program 2007 Annual Report," Document# DEPLW-0913 2008. Augusta: MDEP.