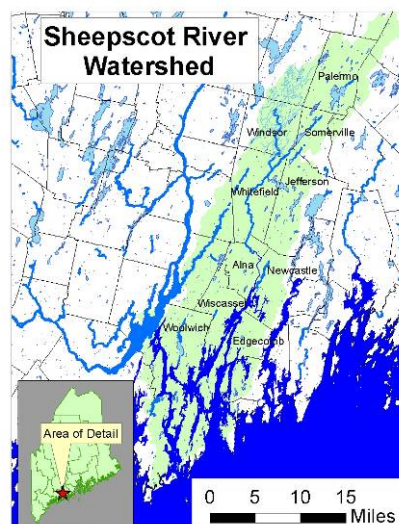


Sheepscot River Watershed Management Plan Project

#2004R-09

| | |
|-------------------|--|
| Waterbody Name: | Sheepscot River |
| Location: | 22 Towns – Kennebec, Knox, Lincoln and Waldo Counties |
| Waterbody Status: | NPS Priority Watershed, 2 Impaired Tributaries |
| Project Grantee: | Time & Tide Resource Conservation and Development Area |
| Project Duration: | April 2004 – February 2007 |
| 319 Grant Amount: | \$62,565 |
| Local Match: | \$9,319 |



PROBLEM:

The Sheepscot River is 58 miles long, extending from Montville to Southport, and its watershed covers approximately 364 square miles. Most of the mainstem is Class AA, and the river and lakes in the watershed are high value recreational resources used for swimming, boating and fishing. The Sheepscot is one of the eight Maine rivers with endangered Atlantic Salmon populations, which brings added special concern for protection and restoration.

Overall, water quality is high, but there are some tributaries either of concern or with impaired water quality. Low dissolved oxygen and sedimentation are considered to be the most significant issues for these tributaries. Land uses of concern include agriculture, forestry, recreation, gravel mining and development. The greatest threat is the conversion of forest to suburban and residential development. Previous work in the watershed includes a road survey of the West Branch and a riparian survey and implementation projects for the Sheepscot and West Branch.

PROJECT DESCRIPTION:

The primary purpose of the project was to develop a watershed management plan for the Sheepscot River. The plan and its recommendations focused on the 12 towns with significant land area (>10 sq. mi.) in the watershed. Time and Tide contracted with Kennebec County SWCD and the Sheepscot River Watershed Council to manage the project.

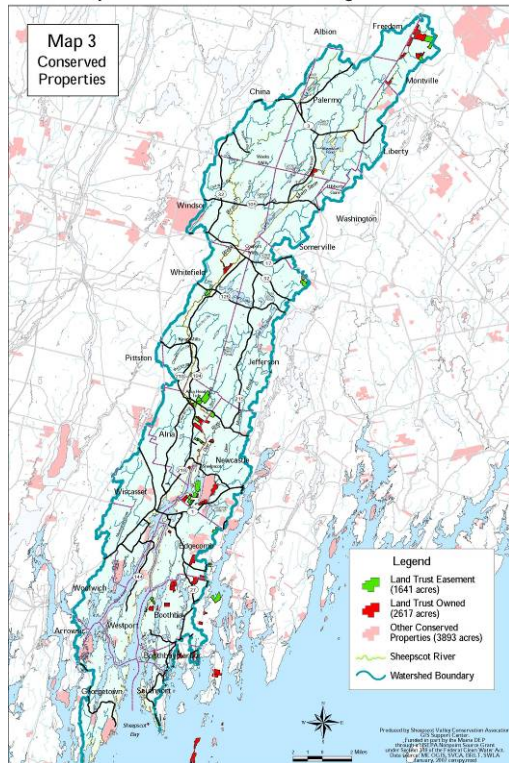


Five project partners completed a survey of road and stream crossings in the twelve towns. The information was compiled in a report and mapped in GIS. Project staff also prepared a water quality assessment report that summarizes and interprets data collected by Sheepscot Valley Conservation Alliance and others. Public input and outreach was generated through four public meetings, meetings with key stakeholders, interviews with 18 landowners and town officials, and presentations at six town meetings. Survey findings, water quality information and public input were used to develop a 90-page watershed management plan, which lays out a clear plan for towns, agencies and water quality organizations.

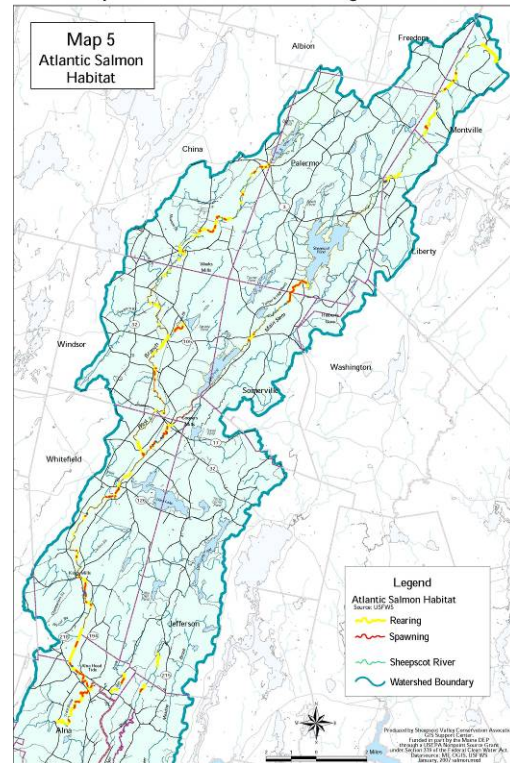
PROJECT OUTCOMES:

- The *Sheepscoot River Watershed Management Plan* (January 2007) was completed. Particular strengths of the plan are the water quality assessment and land use/regulatory analysis sections.
- The plan identifies 20 general recommendation areas and lists specific priority actions and long term actions for each general recommendation.
- A road NPS survey was completed in the watershed. A total of 335 sites were identified, and 105 of the sites were designated as high priority sites.
- Public participation and outreach was generated through four public meetings, meetings with key stakeholders, interviews with 18 landowners and town officials, and five town presentations.

Sheepscoot Watershed Management Plan



Sheepscoot Watershed Management Plan



PROJECT PARTNERS:

Kennebec County SWCD
Knox-Lincoln SWCD
Waldo County SWCD
Sheepscoot River Watershed Council
Sheepscoot Valley Conservation Alliance

CONTACT INFORMATION:

Mary Ellen Dennis, DEP - (207) 287-7729, mary-ellen.c.dennis@maine.gov
Susan Watson, Time & Tide Resource Conservation Area – (207) 622-7847, susan.watson@me.usda.gov
Suggested Citation: Maine Department of Environmental Protection (2008) “Nonpoint Source Management Program 2007 Annual Report,” Document# DEPLW-0913 2008. Augusta: MDEP.