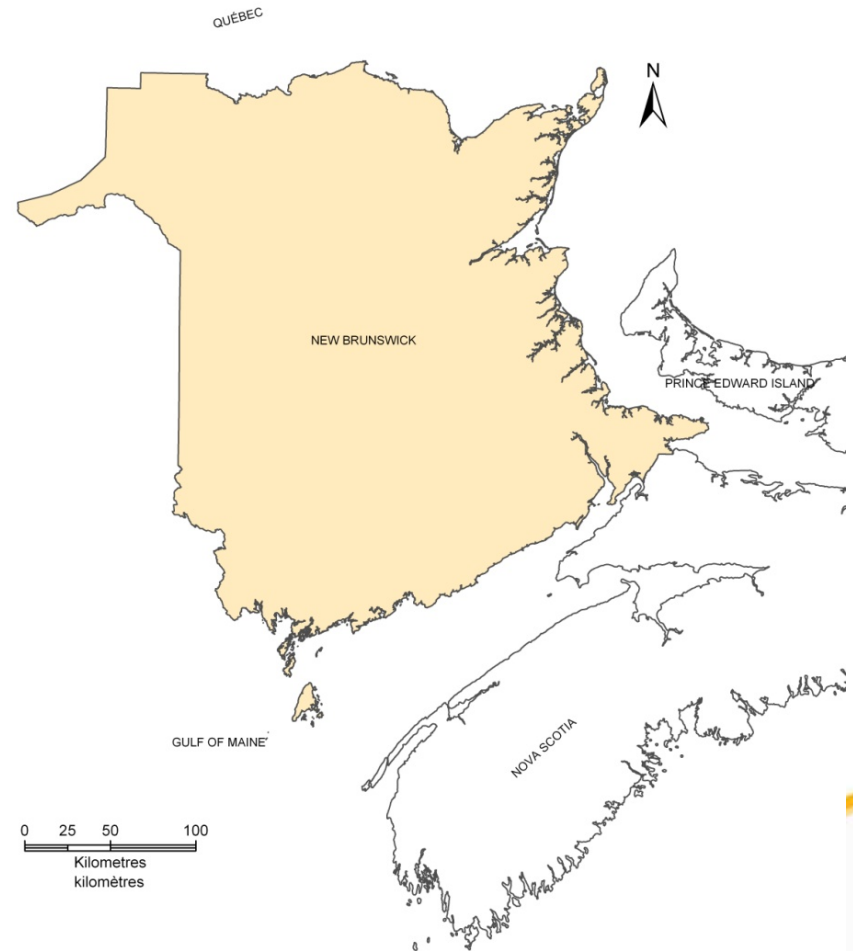


Case Study: Managing the coastline for frequent extreme events - Actions from New Brunswick

**Gulf of Maine Council
September 11, 2013**

NB Context

- Over 5,500 km of coastline.
- **60%** of the population lives within 50 km of the coastline.
- Sea level is predicted to rise by ~ **1m** by 2100.



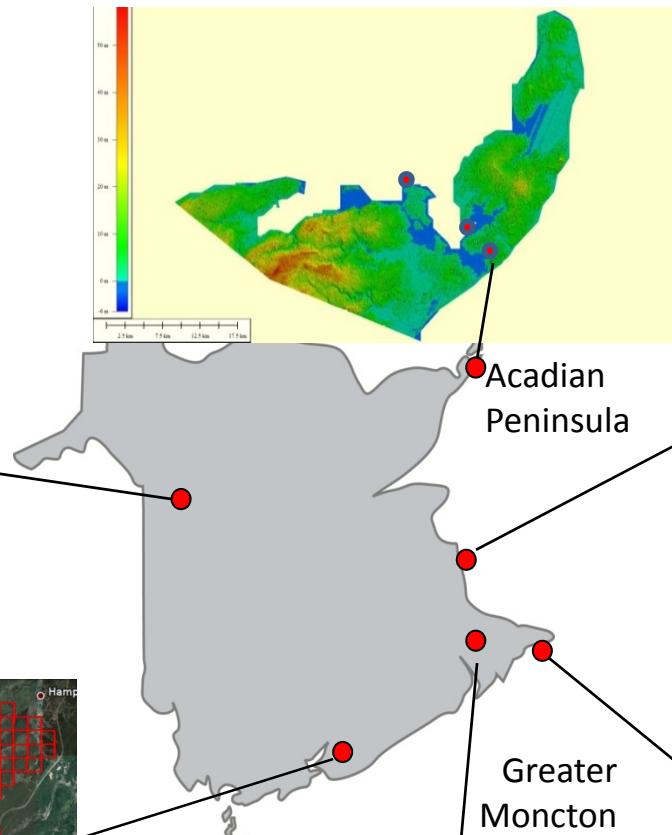
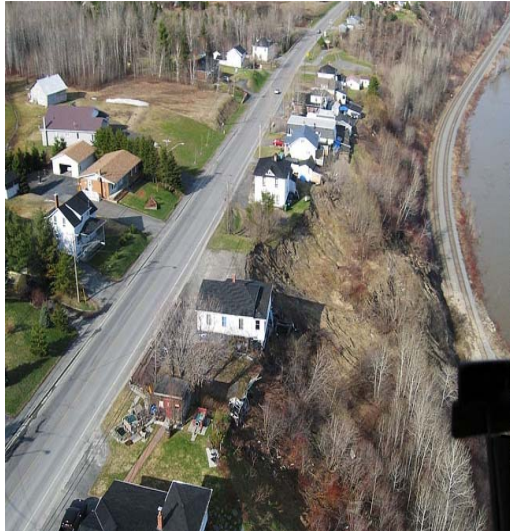
NB Context

- Increased coastal storm surge (sea level rise, erosion)
- Increased hurricane frequency and intensity



Helping Communities: Regional Adaptation Collaborative (RAC)

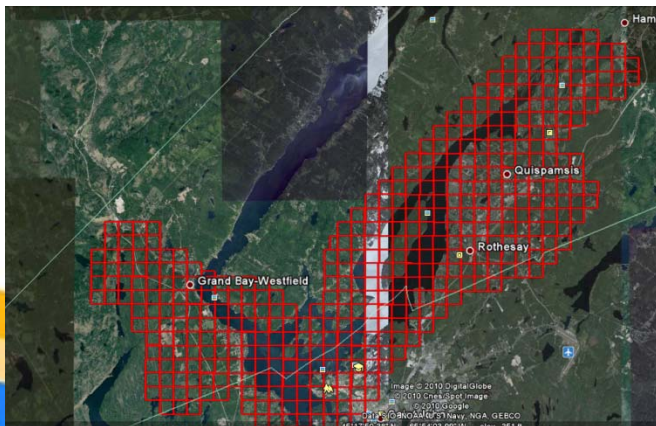
Grand Falls



Richibucto



Lower Saint John



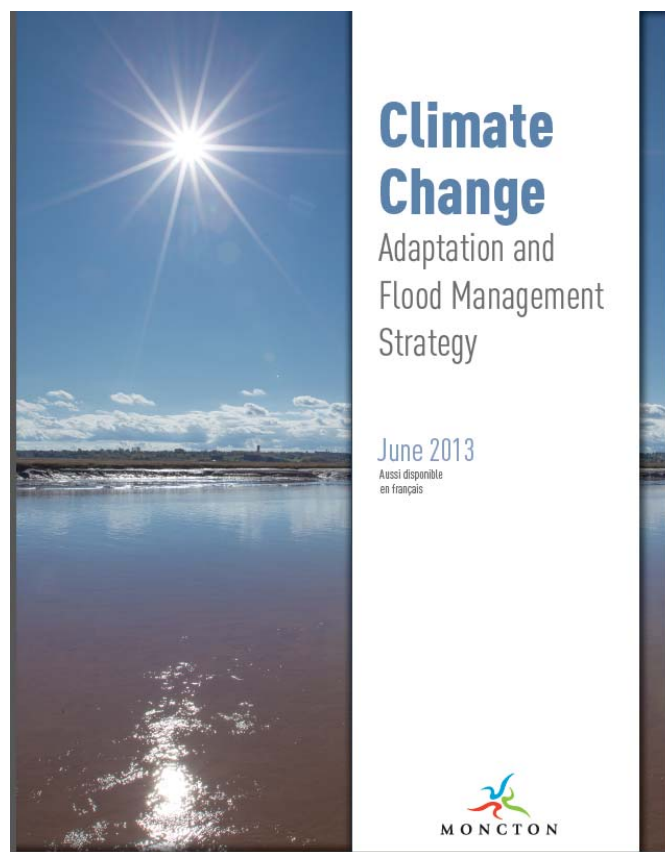
Sackville-Tantramar



Greater Moncton

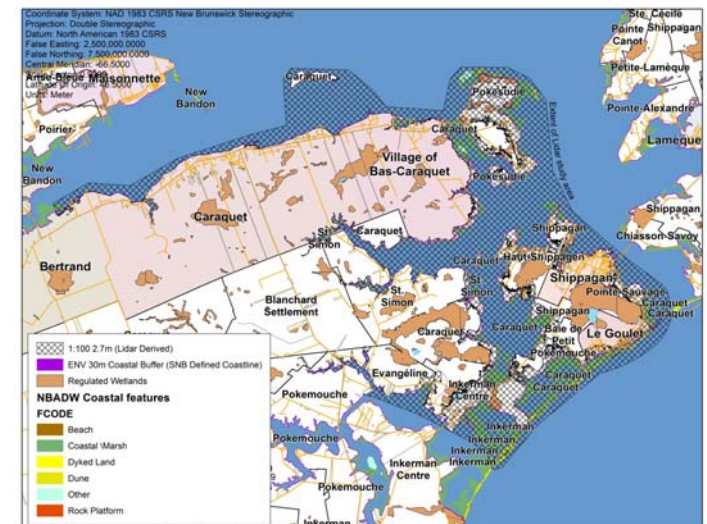


Communities Taking Action: City of Moncton Adaptation Plan

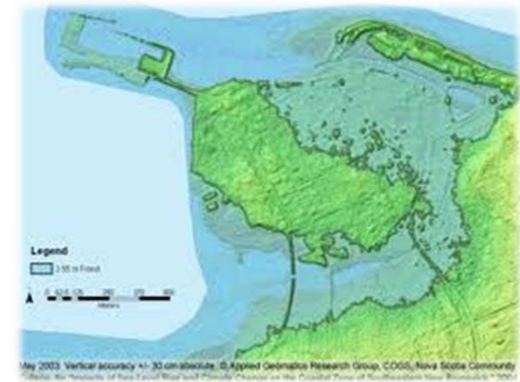
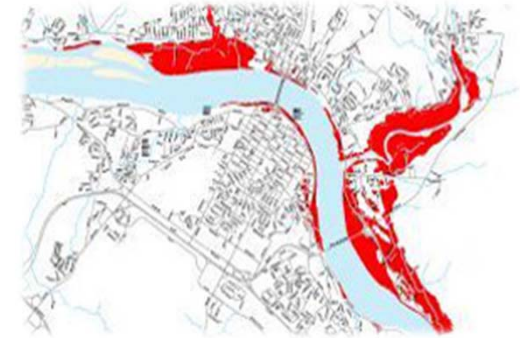
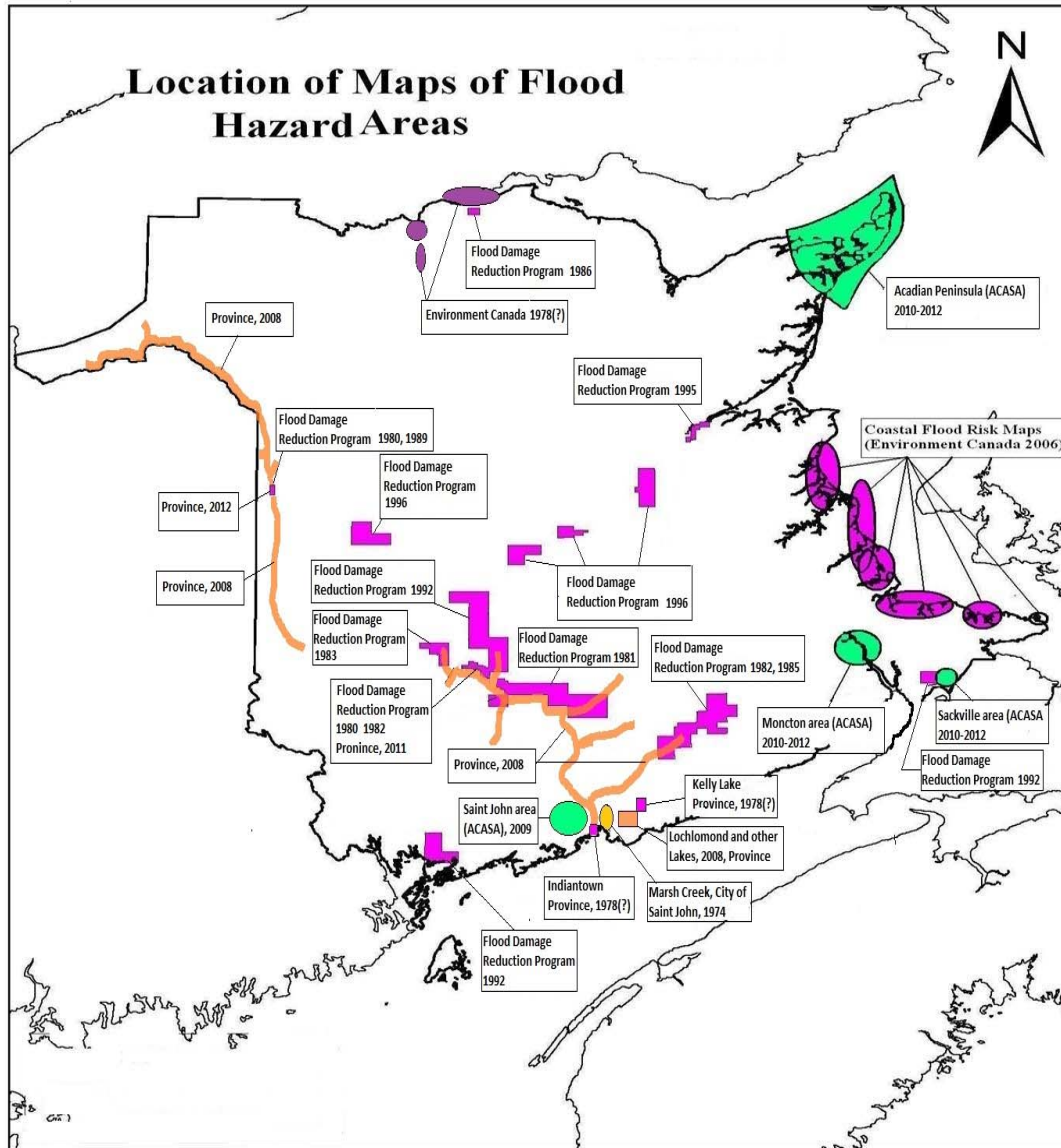


Funding Adaptation Efforts

- Environmental Trust Fund
- Natural Resources Canada (RAC)
- Build Canada (Infrastructure)
- Gas Tax
- Wildlife Trust Fund (Habitat Restoration)



Flood Hazard Mapping

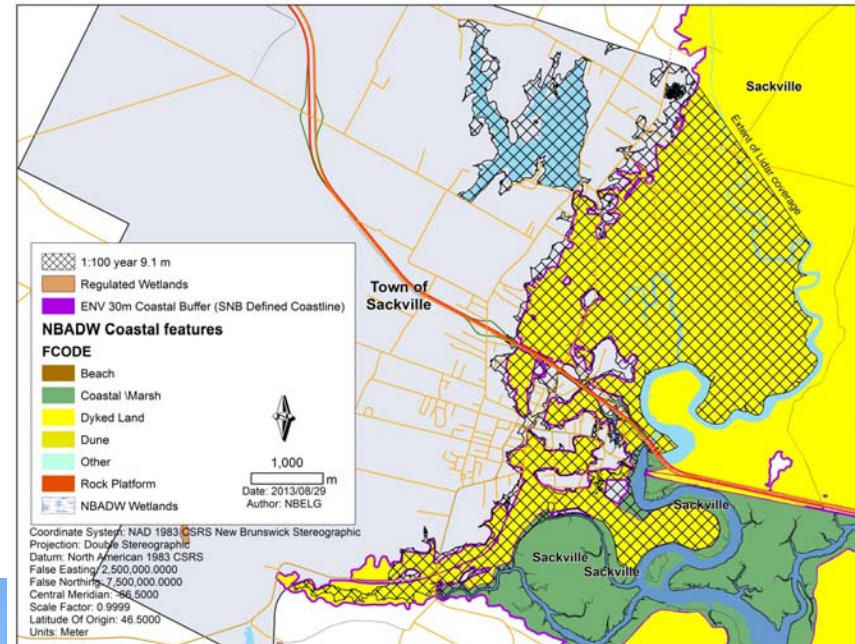


Managing Infrastructure at Risk

- NB Department of Tourism and Infrastructure
 - Asset Management System



Planning



NB Flood Risk Reduction Strategy

Speech from the Throne, Province of NB, Nov 2012:

*“Recognizing the continuing risks associated with extreme weather events and climate conditions, your government will begin a collaborative effort to develop a **province-wide Flood Risk Reduction Strategy**....It will benefit all areas of the province in reducing risk to life and property in the future.”*

And the Challenges are Many



A word cloud on a dark gray rectangular background. The word 'flood' is the largest and most prominent, centered in the middle. Surrounding it are various other words in different sizes and orientations, including: 'Vulnerability' (top), 'Prevention' (top-left), 'Adaptation' (top-left), 'Storm' (top-right), 'Flash' (middle-left), 'LiDAR' (middle), 'Design' (middle-right), 'Risk' (middle-left), 'Ice' (middle), 'Hazard' (middle-right), 'Flood' (middle-left), 'Resilience' (middle-left), 'period' (middle-right), 'surge' (bottom-left), 'proofing' (bottom-middle), 'jam' (bottom-right), 'Critical' (bottom), 'Return' (bottom-left), 'infrastructure' (bottom), and 'Mitigation' (bottom).

Challenges

- Lack of public understanding of flood risk hazards
- Lack of community knowledge of available tools and resources
- Incomplete flood hazard mapping
- No Provincial policy to guide local plans



Challenges

- Managing existing development in high risk areas
- Encouraging property owners to invest proactively
- Competition for infrastructure dollars
- Economic development vs. public safety

